

IsoUs – Ultimate Step  
Plugin – Show Var

[www.promax.it](http://www.promax.it)



**PROMAX**

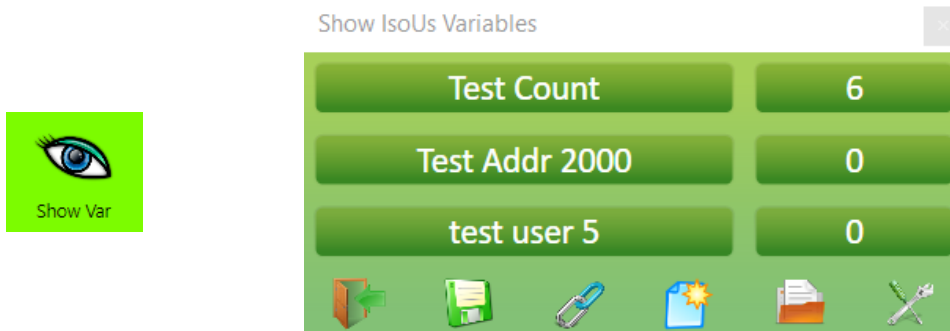
Motion  
&  
Control

The contained information in this handbook are only informative and they can being change without warning and they must not being understandings with some engagement from Promax srl. Promax srl does not assume responsibility or obligates for errors or inaccuracies that can be found in this handbook. Except how much granted from the license, no part of this publication can be reproduced, saved in a recording system or transmitted in whatever form or with any means, electronic, mechanical or recording system or otherwise without Promax srl authorization.  
Any reference to names of society or products have only demonstrative scope and it does not allude to some real organization.

Rev. 1.0.0 © Promax srl

## 1 Show Var

Show Var allows to show the IsoUs **VARIABLES** in a window while the Gcode file is in **EXECUTION**.  
This can show some informations about the Gcode in execution (IsoUs \$VAR, CNC User Generic Var etc.)



## 1.1 Plugin Using

Show Var works like to **VARIABLES MONITOR**, while the Gcode is in execution.

Therefore these variables are showed in a window.

The maximum number of variables showed is **6**.

The PlugIn Show Var, loads automatically the last configuration used. With a separate button is possible load a file previously saved.

Also is possible **LINK** a configuration Show Var file to Gcode file, that allows to open automatically the window of Show Var when the Gcode file is loaded.

### 1.1.1 New File Configuration

For make a new configuration, press the **BUTTON**, extended menù:



Below the menù extended bar is showed.

### 1.1.2 New Configuration or Modify current Configuration

For make a new configuration or modify the current configuration, press **BUTTON**:



Below the configuration page is showed.

Show Var Configure ✕

	Variable Name	Variable Address	Description
<div style="display: flex; gap: 10px;"> <span style="background-color: #4CAF50; color: white; padding: 5px 10px; border-radius: 5px;">+</span> <span style="background-color: #4CAF50; color: white; padding: 5px 10px; border-radius: 5px;">✕</span> </div>	<input type="text"/>	<input type="text"/>	<input type="text"/>
Description			Variable Name
Test Count			\$COUNT
Test Addr 2000			:2000
test user 5			K5

←

### 1.1.2.1 Add a new Variable

For add a new variable :

**1) VARIABLE by NAME**

Insert in the field **Variable Name** the IsoUs variable name (without \$)  
Or choose the Variable Name from list

Variable Name
TEST

**2) VARIABLE by ADDRESS**

Insert in the field **Variable Address** the IsoUs variable address

Variable Address
2001

**3) VARIABLE USER**

Open the User Variables List and choose the variable desired

Variable Name
\$USER 0
\$USER 0
\$USER 1
\$USER 2
\$USER 3
\$USER 4
\$USER 5
\$USER 6
\$USER 7
\$USER 8
\$USER 9

If the name and the address are inserted, an error message will be showed

**4) Insert a variable description in the field Description (optional)**

Description
Test Var

**5) Press BUTTON ADD:**



If the data are corrected, the new variable will be add in the LIST

Description	Variable Name
Test Count	\$COUNT
Test Addr 2000	:2000
test user 5	K5
Test Var	K0

### 1.1.2.2 Remove a Variable from List

For remove a variable from list press **BUTTON**:



The selected variable will be removed from list  
For select a variable click on it.

Test Count	\$COUNT
Test Addr 2000	:2000
Test Var	K0

### 1.1.2.3 Save the new configuration

For save the new configuration press **BUTTON**:



The new configuration will be ready to use.  
Exit to configurator

### 1.1.3 Save a new configuration file

Show Var, shows the last file generated automatically.

For save this file in a new file press the extended menu **BUTTON**:



Below the **BROWSER** will be open

Save the File

File 1  
File 2  
File 3  
file 4  
file 5

Insert the **FILE NAME**

Press **SAVE**

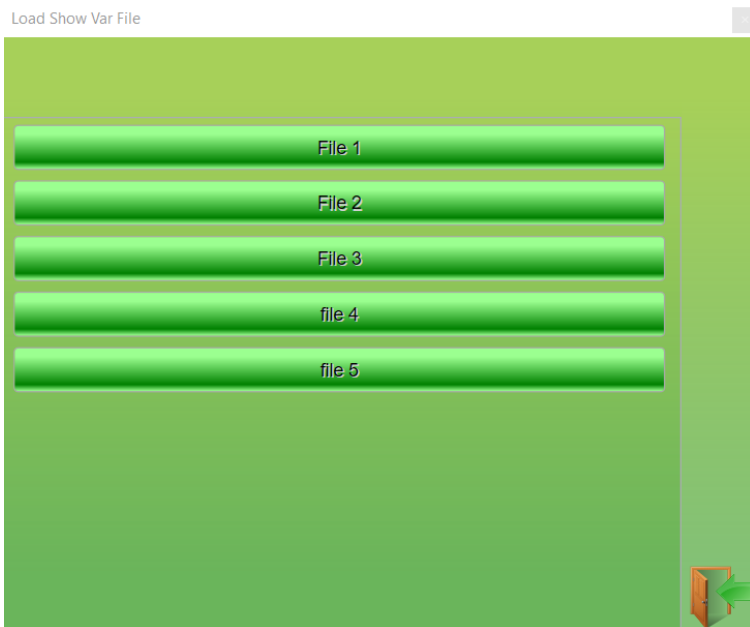
New Cfg File Name

### 1.1.4 Load a Generic configuration file

For load a configuration file previously saved press **BUTTON**:



Below the **BROWSER** will be open



Select with mouse click a desired file

### 1.1.5 Link a configuration file to Gcode file

For **LINK** a configuration file to a Gcode file press **BUTTON**:



Following the IsoUs **BROWSER** will be open. Choose the Gcode file for **LINK**.

After the Gcode file selection, the Show Var **BROWSER** will be showed. Choose the configuration file for LINK to Gcode previously selected.

If the Gcode fiule is already LINKED, a message for **UNLINK** it will be showed.

After unlink, repeat a new **LINK** operation.

When the **LINK** is executed, The Gcode is **CONNECTED** to Show Var configuration file.

So, when the Gcode file will be open, automatically the Show Var window will be showed with configuration file linked

## Index

1	Show Var .....	3
1.1	PlugIn Using .....	4
1.1.1	New File Configurationi .....	4
1.1.2	New Configuration or Modify current Configuration.....	4
1.1.2.1	Add a new Variable.....	5
1.1.2.2	Remove a Variable from List.....	6
1.1.2.3	Save the new configuration.....	6
1.1.3	Save a new configuration file.....	6
1.1.4	Load a Generic configuration file .....	7
1.1.5	Link a configuration file to Gcode file.....	7